

ITEM	DESCRIPTION	DIM X	DIM Y	DIM Z	DIM X	DIM Y	DIM Z
A	REMOTE FILL 1" BSP	2305	343	178	90.7"	13.5"	7"
B	REMOTE RETURN 1" BSP	2375	343	722	93.5"	13.5"	28.4"
C	FUEL DRAIN 1" BSP	2555	52	255	100.6"	2"	10"
D	FUEL FILL	2490	343	173	98"	13.5"	6.8"
E	FUEL GAUGE	2455	343	450	96.7"	13.5"	17.7"
F	REMOTE FUEL IN - 1/4"NPT MALE	1600	350	35	6.3"	13.8"	1.4"
G	REMOTE FUEL RETURN - 1/4" NPT MALE	1650	350	35	65"	13.8"	1.4"

ENGINE/ALTERNATOR COMB	ENG PART No	ALT PART No	WEIGHT (kg)	
			(WITH OIL)	(WITH OIL & WATER)
1006.6TAG/LL3014F	100-040	110-666	1403	1417
1006.6TAG/LL3014H	100-040	110-668	1458	1472
1006-6TA/LL3014F	100-090	110-666	1403	1417
1006-6TA/LL3014H	100-090	110-668	1458	1472
1006.6TAG1/LL3014H	100-103	110-668	1458	1472

NOTE: LL3014H ALT SHOWN

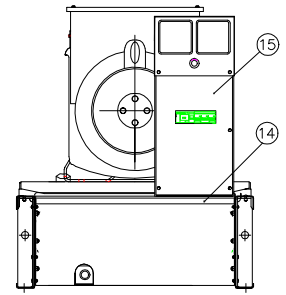
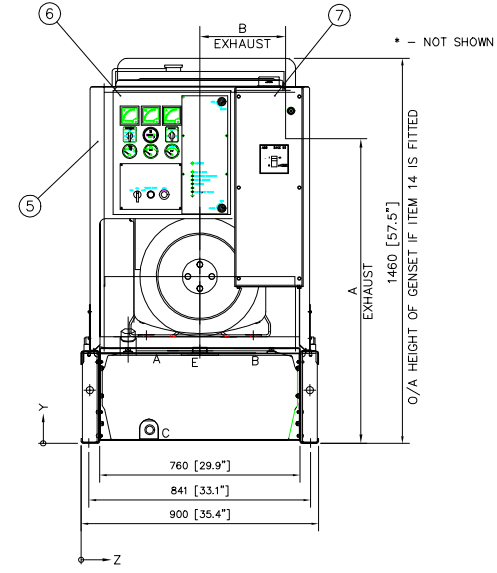
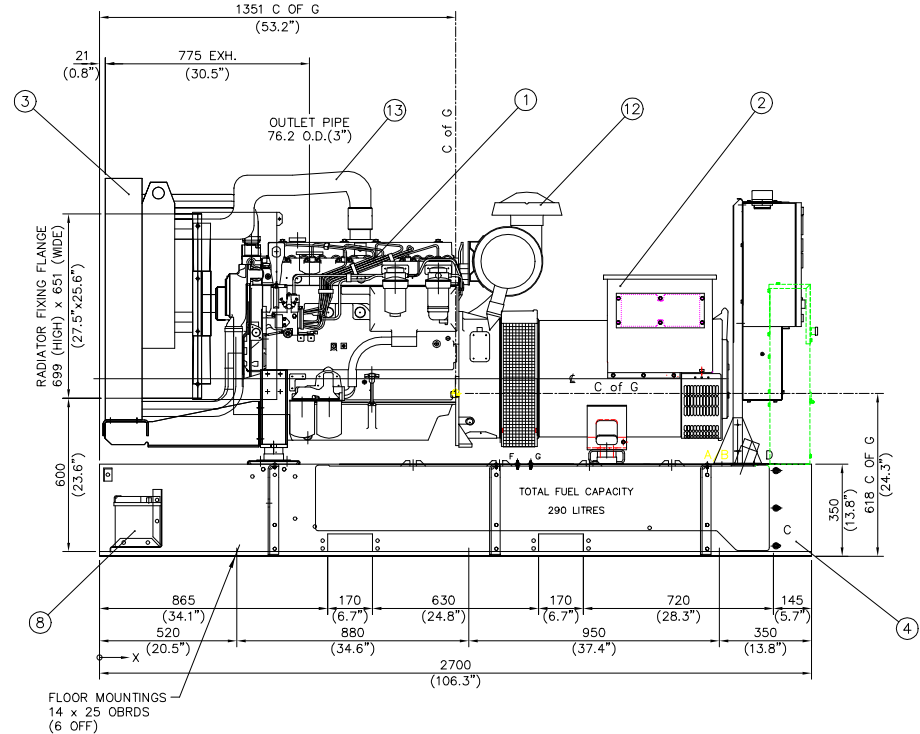
ITEM	QTY.	DESCRIPTION	DWG./PART No.
1	1	ENGINE	SEE TABLE
2	1	ALTERNATOR	SEE TABLE
3	1	RADIATOR ASSY	MGS2768
4	1	TANKBASE - COMPACT	MGS2759
5	1	PANEL STAND ASSY. (IF FITTED)	MGS2449
6	1	CONTROL PANEL (IF FITTED)	-
7	1	CIRCUIT BREAKER (IF FITTED)	-
8	1	BATTERY TRAY ASSY	MGS2485
9	1	SPLIT FAN GUARD ASSY (OUTLINE SHOWN)	MGS2769
10	1	HEAT SHIELD GUARD	MGS2806
11	1	EXHAUST MANIFOLD GUARD (IF FITTED)	MGS2771
12	1	AIR FILTER FOR 1006TAG/TAG1/6TA	MGS2772
13	1	CHARGE AIR PIPEWORK	MGS2760
14	1	MODULAR CONTROL UNIT ARRANGEMENT(IF FITTED)	MGS4062
15	1	MODULAR CONTROL UNIT (IF FITTED)	-
16	1	LV1 - LUBE OIL DRAIN ASSY.	MGS2797
17	1	WV1 - COOLANT DRAIN ASSY.	MGS2798
18a	1	DECAL ARR. - (Universal Labels)	MGS3055
18b	1	DECAL ARR. - (B & W Labels)	MGS3062
18c	1	DECAL ARR. - (OLY Labels)	MGS3063
19a	1	DECAL ARR. - (ONA Labels)	MGS3064

FUEL TANK AND ASSOCIATED COMPONENTS NOT FITTED  
WHEN FUEL LINES TERMINATED AT EDGE OF BASEFRAME

NOTE: WEIGHTS AND C OF G TO BE CONFIRMED

ENGINE	DIM A	DIM B
1006TAG	1155(45.5")	325(12.8")
1006-6TA	1155(45.5")	325(12.8")
1006TAG1	1149(45.2")	350(13.8")

For Information Only



PARTIAL VIEW OF GENSET WITH MODULAR CONTROL UNIT IF FITTED (ENGINE AND RADIATOR NOT SHOWN)

ISSUE	DESCRIPTION	ECR/DCR	BY	DATE
F	MODIFY BASETANK TO SUIT MODULAR CONTROL UNIT	8009	Y.C.TAN	21/09/00
E	AS/ALTS LL3014F/JH PART NEW CHANGED FROM 110-58* TO 110-66* E.C.G.11244	-	R.T.Y	30/04/99
D	ECR8310 ALTERNATOR BEAM WAS M8C1211, TAGI INFORMATION COMPLETE	-	R.J.S.	04/02/99
C	ECR9557/B8/T8M '8 WAS MISCOPIED	-	S.F.	29/01/99
B	ADDED 1006TAG1/LL3014H ENGINE/ALT COMBINATION (ECR No 2388)	-	S.B.	13/05/95
A	FIRST ISSUE	-	-	-

TOLERANCES EXCEPT WHERE OTHERWISE STATED:  
0 - 500mm ± 0.2mm  
500 - 2000mm ± 0.3mm  
OVER 2000mm ± 0.5mm  
ANGULAR ± 1mm

THIS DRAWING IS COPYRIGHTED AND MAY BE COPIED ONLY FOR THE PURPOSES OF MAINTAINING THE PURCHASED EQUIPMENT BY THE PURCHASER

DO NOT SCALE ALL DIMENSIONS IN MILLIMETRES UNLESS OTHERWISE STATED

DRN. BY IAN BARR  
DATE 23/03/98

APPD. BY  
DATE 13/11/00

TITLE 1006TAG/1006TAG1/1006-6TA WITH LL3014F/H ALT OPEN GENSET WITH NON-UL LISTED TANK

SHEET SIZE A1 ORIGINAL SCALE 1:9 DRAWING NO. MGA3833 ISSUE F